

EQUALITY FORUM

MONDAY, 22ND FEBRUARY 2016, 6.30 PM
LANCASTRIAN, TOWN HALL, CHORLEY

Please find enclosed the presentations from above meeting of the Equality Forum.

3 **Disabled Go (Pages 3 - 30)**

Disabled Go have been working in partnership with Chorley Council to develop disabled and dementia friendly venue access guides. They provide detailed access information on a range of venues across Chorley enabling visitors and residents to reach an informed judgement about the suitability of venues before making the most of what Chorley has to offer. Disabled Go consulted with members of the equality forum at the start of the project and they are now looking to share progress and gain any further feedback on the venue guides.

4 **Chorley Council Equality Objectives (Pages 31 - 52)**

The Council has a duty to develop and publish equality objectives every 4 years. Equality objectives help focus attention on the priority equality issues for Chorley in order to deliver improvements in policy making, service delivery and employment. We are now in the process of reviewing objectives and would like feedback from the forum to help establish new objectives from April 2016. The current objectives can be found on the Council website <http://chorley.gov.uk/Pages/AtoZ/Equality-information.aspx>

GARY HALL
CHIEF EXECUTIVE

This page is intentionally left blank



Trusted Inclusive & Accessible Solutions



Chorley Council

22nd February 2016

DisabledGo



- Founded in 2000 by Dr Gregory Burke.
- Social enterprise, not for profit model.
- First online Access Guide published in 2002.
- Leading provider of online access information.
- 300 clients, public and private sector.
- 100 local authorities.
- 125,000 access guides on www.disabledgo.com.



Working in Partnership



Agenda Page 5

Agenda Item 3



Trusted Inclusive & Accessible Solutions

Search here for accessible places to go...

e.g. hotels, parks...

e.g. town, city or postcode

10 Miles

Search

Popular: Restaurants Hotels Public Houses & Bars Parks & Gardens Cafes Museums Universities

More Information
scroll down



Home About Us News and Blog

- Esperanto
- Estonian
- Filipino
- Finnish
- French
- Galician
- Georgian
- German

Language AA

Login/Register | [f](#) [t](#)

How to use DisabledGo

Search here for accessible places to go...

Miles

Popular: Restaurants Hotels Public Houses & Bars Parks & Gardens Cafes Museums Universities

More Information scroll down

Search here for accessible places to go...

Miles

Search

Popular: Restaurants Hotels Public Houses & Bars Parks & Gardens Cafes Museums Universities

More Information
[scroll down](#)

Search here for accessible places to go...

- Close
- Chester Racecourse

[Public Houses & Bars](#) [Parks & Gardens](#) [Cafes](#) [Museums](#)

More Information
[scroll down](#)

Places to Go

Search Places to Go

You Are Here: [Home](#) > [Places to Go](#) > [Search Places to Go](#) > The North West

The North West

Local Authority

- [Blackpool Council](#)
- [Cheshire West and Chester](#)
- [Chorley Council](#)
- [Halton Borough Council](#)
- [Isle of Man Government](#)
- [Liverpool City Council](#)
- [Stockport Metropolitan Borough Council](#)

Education

- [Blackpool and The Fylde College](#)
- [Bolton College](#)
- [Lancaster University](#)
- [Liverpool John Moores University](#)
- [Salford University](#)
- [Southport College](#)
- [Stockport College](#)
- [Tameside College](#)



- Scotland
- North East
- East Anglia
- London
- South East
- South West
- Wales
- Midlands
- North West
- Northern Ireland
- Republic Of Ireland

[Home](#)

[About Us](#)

[Places to Go](#)

[How to use DisabledGo](#)

[News and Blog](#)

[Places to Go](#)

You Are Here: [Home](#) > [Places to Go](#) > Campus



[Chorley Council](#)

 **Chorley Council**
Civic Offices
Union Street
Chorley
Lancashire
PR7 1AL
England

 01257 515151
 <http://www.chorley.gov.uk/>

[View Our Venues](#)

Welcome to Chorley

We are committed to providing clean, safe and healthy communities as well as equality of access for all of our residents, and visitors to Chorley. We are therefore pleased to have worked with Disabled Go to produce free online disabled and dementia access guides, enabling visitors and residents alike to reach an informed judgment about the suitability of access before making the most of what Chorley has to offer.

The DisabledGo online access guides provide valuable detailed access information on various venues and public spaces across Chorley, including, shops, restaurants, leisure centres, parks, museums, and many more.

We are committed to developing a Dementia Friendly Community within Chorley, and this access guide includes information that will be helpful to people with dementia, as well as their friends, family and carers. This includes information on colour contrast, lighting, signage and seating.

We encourage all businesses and venues within Chorley to see how they could improve the experience of customers and visitors with dementia, and this guide highlights those that have already invested in training for their teams.

Whatever your reason for visiting Chorley we hope that you are able to enjoy making the most of the many family events, services, facilities and places of interest Chorley has to offer.

[If you want to learn more about events in Chorley download our What's Happening magazine at chorley.gov.uk/whatson.](http://chorley.gov.uk/whatson)

[Please click here for a list of Dementia aware places.](#)

[View All Chorley Council Venues](#)

Community Places Venues	Expand +
Entertainment, Culture and Leisure Venues	Expand +
Public and Professional Services Venues	Expand +
Retail and Shopping Venues	Expand +
Travel and Accommodation Venues	Expand +

[Places to Go](#)

[Search Places to Go](#)

Customise your results

Make the website work for you by customising your results based on your own requirements:

Step 1: Click on any symbol(s) to match your needs.

Step 2: Click on "update results" to show all the places suited to you.

Refine Your Results

Current Search

You searched for "dementia aware" chorley council

[Update Results](#)

[Cookie Policy](#)

You Are Here: [Home](#) > [Places to Go](#) > Search Results

Search Results

Showing 1 to 10 of 13

View As  List  Map

Pages: [12](#) >

Sort By:



[Argos](#) ★★★★★

 50-54 Market Street, Chorley, Lancashire, PR7 2SE

 0345 165 7390

 customer.enquiries@argos.co.uk

 <http://www.argos.co.uk>

Guide Last Updated: 09/10/2015

[View Map and Reviews](#)





[Astley Farmhouse](#) ★★★★★

 Astley Park, Chorley, Lancashire, PR7 1XA

 01257 515 151



[Please click here for a list of Dementia aware places.](#)

[View All Chorley Council Venues](#)

Community Places Venues

Collapse -

[Clubs & Associations](#)

[Community Halls](#)

[Dementia Aware](#)

[Places of Worship](#)

[View All Community Places Venues within Chorley Council](#)

Entertainment, Culture and Leisure Venues

Collapse -

[Activities](#)

[Arts Centre](#)

[Cafes](#)

[Golf Clubs](#)

[Leisure Centres](#)

[Libraries](#)

[Museums](#)

[Parks & Gardens](#)

[Public Houses & Bars](#)

[Restaurants](#)

[Swimming Pools](#)

[Theatres](#)

[Tourist Attractions](#)

[View All Entertainment, Culture and Leisure Venues within Chorley Council](#)

Public and Professional Services Venues

Collapse -

[Banking & Finance](#)

[Bureau de Change](#)

[Child Care](#)

[Conference Centres & Halls for Hire](#)

[Council & Government Services](#)

[Council Offices](#)

[Dry Cleaners](#)

[Estate Agents & Letting Agents](#)

[Health Centre](#)

[Installers](#)

[Ironing Services](#)

[Opticians](#)

[Pharmacists](#)

[View All Public and Professional Services Venues within Chorley Council](#)

Retail and Shopping Venues

Expand +

Places to Go

[Search Places to Go](#)

Customise your results

Make the website work for you by customising your results based on your own requirements:

Step 1: Click on any symbol(s) to match your needs.

Step 2: Click on "update results" to show all the places suited to you.

Refine Your Results

Current Search

You searched for "parks & gardens" chorley council

[Update Results](#)

Facilities

[More Info](#)

Search Results

Showing 1 to 2 of 2

View As [List](#) [Map](#)

Pages: 1

Sort By: [A-Z](#)



[Astley Hall & Park](#)

★★★★★

Astley Park, Chorley, Lancashire, PR7 1XA

01257 515 151

<http://chorley.gov.uk/Pages/AtoZ/Astley-Hall.aspx>

Guide Last Updated: 02/12/2015

[View Detailed Access Guide](#)



[Yarrow Valley Country Park](#)

★★★★★

off Birkacre Road, Chorley, Lancashire, PR7 3QL

01257 515 151

contacts@chorley.gov.uk

<http://chorley.gov.uk/Pages/AtoZ/Parks%20and%20nature%20reserves...>

Guide Last Updated: 02/12/2015

[View Detailed Access Guide](#)

Showing 1 to 2 of 2

View As [List](#) [Map](#)

Pages: 1

[Cookie Policy](#)

Customise your results

Make the website work for you by customising your results based on your own requirements:

Step 1: Click on any symbol(s) to match your needs.

Step 2: Click on "update results" to show all the places suited to you.

Refine Your Results

Current Search

You searched for "parks " chorley council

[Update Results](#)

Facilities

[More Info](#)



Cookie Policy

Sort By:



[Astley Hall & Park](#)



Astley Park, Chorley, Lancashire, PR7 1XA

01257 515 151

<http://chorley.gov.uk/Pages/AtoZ/Astley-Hall.aspx>

Guide Last Updated: 02/12/2015

[View Detailed Access Guide](#)



[Yarrow Valley Country Park](#)



off Birkacre Road, Chorley, Lancashire, PR7 3QL

01257 515 151

contacts@chorley.gov.uk

<http://chorley.gov.uk/Pages/AtoZ/Parks%20and%20nature%20reserves...>

Guide Last Updated: 02/12/2015

[View Detailed Access Guide](#)

Showing 1 to 2 of 2

View As List Map

Pages: 1

You Are Here: [Home](#) > [Places to Go](#) > Venue



Chorley Library



Guide Last Updated: 01/12/2015




[Explain These Icons](#)


[Add To My Trip](#)

[View the Access Guide](#)



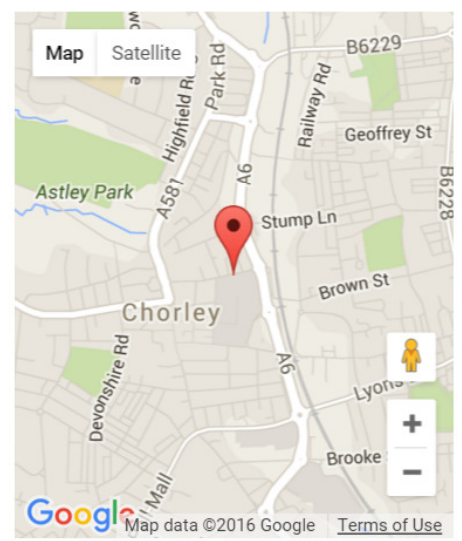
 Union Street, Chorley, Lancashire, PR7 1EB

 0300 123 6703

 chorley.library@lancashire.gov.uk

 <http://www.lancashire.gov.uk/libraries-and-archives/libraries/find-a-library/chorley-library.aspx>

[Something Changed? Click Here](#)



Venue Reviews

Average Rating: ★★★★★

[Review this Venue](#)

Access Guide

Opening Times	Expand +
Location	Expand +
Parking	Expand +
Outside Access (Main Entrance)	Expand +
Level Change (Main Entrance)	Expand +
Reception	Expand +
Inside Access	Expand +
Library	Expand +
Other Floors	Expand +
Lift	Expand +
Accessible Toilet	Expand +
Level Change (Accessible Toilet)	Expand +
Standard Toilet	Expand +
Additional Info	Expand +

[Cookie Policy](#)

- The venue does have its own car park.

Venue Car Park

Collapse -

- Parking is free for all users.
- The car park is located at the side of the building.
- The car park type is open air/surface.
- Parking spaces for Blue Badge holders do not need to be booked in advance.
- There is/are 2 designated parking bay(s) within the car park.
- The dimensions of the designated parking bay(s) are 500cm x 500cm (16ft 5in x 16ft 5in).
- The nearest designated bay is 18m (19yd 2ft) from the main entrance.
- The furthest designated bay is 23m (25yd 6in) from the main entrance.
- The route from the car park to the entrance is accessible to a wheelchair user with assistance.
- Assistance may be required because there is / are slopes/ramps.
- The car park surface is tarmac.
- There is a dropped kerb between the car park and the venue.
- The dropped kerb does not have tactile paving.
- The patron does not have to cross a road.



- This information is for the entrance located at the front of the building.
- There is not level access into the venue.
- The main door(s) open automatically.
- The doors are double width.
- The door opening is 128cm (4ft 2in) wide.



Second set of doors

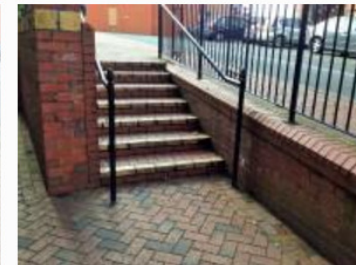
Collapse -

- There is a second set of doors.
- The door(s) open automatically.
- The doors are double width.
- The door opening is 140cm (4ft 7in) wide.

Level Change (Main Entrance)

Collapse -

- There is a ramp or slope to access this service.
- The ramp or slope is located to the left as you face the entrance.
- The ramp or slope is moderate.
- The ramp or slope is permanent.
- There is a level landing at the top of the ramp.
- The ramp does not have handrails.
- There is a / are step(s) to access this area / service.
- The step(s) is/are located to the left as you face the entrance.
- There is / are 7 step(s) to the area / service.
- There is not tactile paving at the top and bottom of the steps.



Reception

Collapse -

- The desk is 14m (15yd 11in) from the main entrance.
- There is level access to reception from the entrance.
- The reception desk is medium height (77cm - 109cm).
- The desk has a low (76cm or lower) section.
- The lighting levels are bright.
- There is a hearing assistance system.
- The type of system is a fixed loop.
- Staff are trained to use the system.



Inside Access

Collapse -

- There is level access to the service.
- This venue does not play background music.
- Motorised scooters are allowed in public parts of the venue.
- The lighting levels are varied.



Library

Collapse -

- This library does not have a regular supply of books in Braille.
- This library does have a regular supply of books in large print.
- This library does have a regular supply of books in audio format.
- There is an ordering service.
- The library does have computers with accessible software.
- Accessible software includes Zoomtext.
- Auxiliary aids are available for computer users.
- A height adjustable table and height adjustable chair is / are available.



Other Floors

Collapse -

Steps

Collapse -

- The floors which are accessible by stairs are G-1.
- There are 15+ steps between floors.
- The steps are clearly marked.
- The steps are medium (11cm - 17cm).
- The steps do have handrails.
- The steps have a handrail on both sides.
- There is a landing.



There is a warning.

- The lighting levels are bright.

Lift

Collapse -

- There is a lift for public use.
- The lift is located to the left as you enter.
- The lift is a standard lift.
- The floors which are accessible by this lift are G-1.
- The lift is 12m (13yd 4in) from the main entrance.
- Staff do not need to be notified for use of the lift.
- The clear door width is 75cm (2ft 6in).
- The dimensions of the lift are 143cm x 130cm (4ft 8in x 4ft 3in).
- There are not separate entry and exit doors in the lift.
- There is a mirror to aid reversing out of the lift.
- The lift does have a visual floor indicator.
- The lift does have an audible announcer.
- The controls for the lift are within 120cm from the floor.
- The lift does have Braille markings.
- The lift does have tactile markings.
- The lighting level in the lift is medium.



Accessible Toilet

Expand +

Change (Accessible Toilet)

Expand +

Accessible Toilet

Collapse -

Location of and access to accessible toilets

Collapse -

- There are accessible toilets within this venue designated for public use.
- The toilet is not for the sole use of disabled people.
- There is pictorial signage on or near the toilet door.
- The accessible toilet is 18m (19yd 2ft) from the main entrance.
- In the reception area.
- There is not level access to the accessible toilet.

Features and dimensions of accessible toilets

Collapse -

- This is a unisex toilet.
- A key is not required for the accessible toilet.
- The door opens outwards.
- The door is locked by a locking handle.
- The width of the accessible toilet door is 86cm (2ft 10in).
- The door weight is heavy.
- The dimensions of the accessible toilet are 164cm x 260cm (5ft 5in x 8ft 6in).
- There is sufficient turning space in the cubicle for a wheelchair user.
- There is a lateral transfer space.



mirrors are placed at a lower level or at an angle for ease of use.

- The height of the toilet seat above floor level is 48cm (1ft 7in).
- There is a hand dryer.
- The hand dryer cannot be reached from seated on the toilet.
- The hand dryer is not placed higher than 100cm (3ft 3in).
- There is not a towel dispenser.
- There is a toilet roll holder.
- The toilet roll holder can be reached from seated on the toilet.
- The toilet roll holder is not placed higher than 100cm (3ft 3in).
- There is a sink.
- The sink can be reached from seated on the toilet.
- The sink is placed higher than 74cm (2ft 5in).
- The height of the sink is 80cm (2ft 7in).

Colour contrast and lighting in accessible toilets Collapse -

- The contrast between the external door and wall is good.
- The contrast between the internal door and wall is good.
- The contrast between the grab rails and wall is good.
- The contrast between the drop down rails and wall is good.
- The contrast between the walls and floor is good.

- Baby change facilities are located within the venue.
- Baby change facilities are located within the accessible toilet.
- The height of the baby change table once extended is 93cm (3ft 1in).
- Inside the venue, there is level access to the baby change facility.

Comments

Expand +

Level Change (Accessible Toilet)

Expand +

Standard Toilet

Collapse -

Availability and Location of Standard Toilets

Collapse -

- Standard toilets are not available.

Additional Info

Collapse -

- Staff do receive disability awareness / equality training.
- Documents can be requested in Braille.
- Documents can be requested in large print.
- A bowl of water can be provided for an assistance dog.

A member of staff trained in BSL skills is not generally on duty.

This service cannot be requested.

disabled access chorley



Sign in

All News Shopping Images Maps More Search tools



About 161,000 results (0.47 seconds)

Chorley Council Disabled Access Guides

www.disabledgo.com/organisations/chorley-council/main

Chorley Council assessability guides for **disabled** visitors. View local venue information & plan your next trip today!

Chorley and South Ribble Hospital Disabled Access Guides

www.disabledgo.com/organisations/.../chorley-and-south-ribble-hospital-...

Chorley and South Ribble Hospital assessability guides for **disabled** visitors. View local venue information & plan your next trip today!

Disabled Access in Chorley, Lancashire | Reviews - Yell

<https://www.yell.com/s/disabled+access-chorley-lancashire.html>

Find **Disabled Access** in **Chorley**, Lancashire on Yell. Get reviews and contact details for each business including photos, opening hours and more.

Facilities - Chorley and South Ribble Hospital - NHS Choices

www.nhs.uk/Services/hospitals/Facilities/DefaultView.aspx?id=1314

★★★★★ Rating: 4 - 140 reviews

29 Oct 2014 - For **disabled access** details for **Chorley** & South Ribble District General Hospital please click on the Directions/**Parking** link from the Trusts ...

Parking - Chorley Borough Council

chorley.gov.uk/Pages/AtoZ/Parking.aspx

****Parking** over Christmas and New Year** We've got free **parking** on all our car parks in **Chorley** town centre all day on Christmas Day, ... **Disabled parking**.

Hotels For The Disabled in Chorley Bed & Breakfast ...

www.hotels.uk.com > England > Lancashire

40 Hotels - Disabled equipped Chorley Hotels and Bed & Breakfast in Chorley ...

Home ▶ Astley Hall

Like 157 Tweet Pin it Share 55

Astley Hall

"Astley Hall is the most exhilarating house in Lancashire" - Simon Jenkins in his book 'England's 1000 Best Houses'.

Astley Hall is a museum and art gallery housed within a Grade I listed historic house. The Hall is set within the beautiful surroundings of Astley Park which include historic woodland, a lake, a fully renovated Victorian walled garden alongside clean and modern facilities for visitors to enjoy.

The Hall is perhaps best known for its stunning Jacobean plasterwork ceilings and the house is built around an internal Elizabethan courtyard. The four wings of the house were extended by the families who lived here and most of the original features are retained to this day.

The walled garden is a dedicated event space and since the Heritage Lottery funded renovation project in 2009 it has built up a varied programme of cultural events throughout the year. The east facing part of the walled garden is home to a community food growing project and includes a small orchard alongside raised beds full of vegetables, fruits, herbs and salads. Much of the produce is used by Café Ambio, the onsite café within the Coach House building.

Café Ambio is open 7 days a week. The team are passionate about locally sourced home-made food, freshly baked scones, cakes, quality coffees and refreshments.

Astley Hall, Coach House and Park wedding open days

Come and discover one of Lancashire's most romantic wedding venues when Astley Hall, Coach House and Park opens up its ceremony rooms for all to view on selected dates in February.

You will be able to take a look around Astley Hall's majestic Great Hall with its remarkable plaster ceilings and sweeping staircase and peruse the more intimate panelled Dining Room with its spectacular views over the lake and fountain.

The Coach House Conference Room will also be dressed for the occasion and you will get the opportunity to pick up a copy of our spectacular new wedding brochure and speak to our dedicated wedding coordinator about your special occasion.



Popular Tasks

Download It

- [Astley Hall Wedding opening days ▶](#)
- [Astley Resource box hire pack ▶](#)
- [Fees and charges for Astley Hall and Coach House ▶](#)
- [Group visits information ▶](#)
- [School visits information ▶](#)

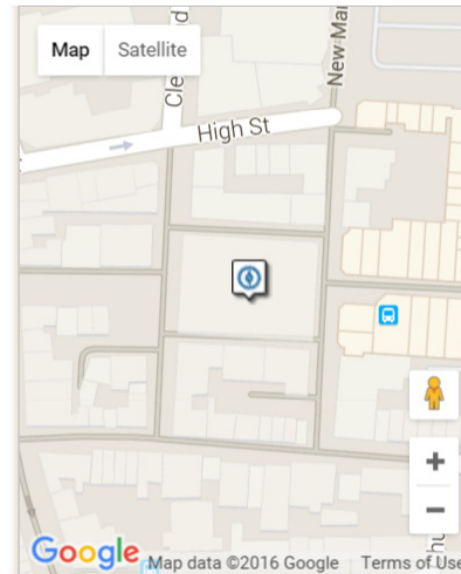
More Information

- [Astley Hall Wedding brochure 2016 ▶](#)
- [Events ▶](#)

- ### Useful links
- [Astley Hall, Coach House and Park - Facebook](#)
 - [BBC - painting collections online](#)
 - [Friends Of Astley Hall](#)
 - [Friends Of Astley Hall - Twitter](#)
 - [Friends of Astley Park](#)
 - [Susannah Knight](#)

You are here: Explore > Chorley

Chorley



Search Accommodation

Accommodation Type
-- Any --

What location?
-- Any --

Or type a Location/Postcode

Name of Establishment

Book Online / Check Availability

Accessibility

Green Tourism Accredited Establishments

Search

Located at the foot of the [West Pennine Moors](#), the market town of Chorley has a wealth of history dating back to the Bronze Age, 3,500 years ago! Pick up a free guide to Chorley's new Heritage Trail, which passes some of the town's best sights on its hour-long trail. You'll discover central [Aetley Park](#), 43 hectares of well-tended parkland

Contact



Anna Borthwick

Executive Director

E: anna.borthwick@disabledgo.com

T: 01438 842710



Equality Objectives

Presentation by
Victoria Willett
Performance and Partnerships Manager

Date
22/02/16



Our Equality Duty

The Equality Act 2010 imposes duties on all Public Bodies, including the Council

There is the general equality duty and the specific Public Sector duty

The General Equality Duty

When exercising its functions (e.g making policies or delivering services) the Council must give due regard to the need to:

- Eliminate unlawful discrimination, harassment and victimisation and other conduct prohibited by the Act
- Advance equality of opportunity between people who share a protected characteristic and those who do not
- Foster good relations between people who share a protected characteristic and those who do not

The General Equality Duty

The Act explains that having due regard involves:

- Removing or minimising disadvantages suffered by people due to their protected characteristics
- Taking steps to meet the needs of people from protected groups where these are different to the needs of other people
- Encouraging people from protected groups to participate in public life or in other activities where their participation is disproportionately low

Our Equality Strands

We have identified **nine equality strands**.

Each strand identifies a group of customers who share a similar characteristic, which is protected. The strands are:

- Age
- Disability
- Gender Reassignment
- Pregnancy and Maternity
- Race
- Religion and Belief
- Rurality
- Sex
- Sexual Orientation

The Specific Public Sector Duty

As well as complying with the general duty, the Council must comply with some specific duties. These are:

1. Publish Information to demonstrate it complies with the general equality duty
- 2. Prepare and publish equality objectives**
3. Publish information about the analysis it has taken to understand whether its policies and practices meet the general duty
4. Publish information about how it engages with people who have an interest in furthering the aims of the general duty

Publishing Equality Objectives

The purpose of our equality objectives are to strengthen our performance against the general equality duty, through providing focus on achieving specific outcomes.

Our last set of equality objectives were set in 2012 and therefore are due to be updated and published by April 2016.

Alongside this, we are updating our equality scheme document and our general approach to equality is being reviewed and refreshed to ensure we are meeting our equality duties under the Equality Act 2010.

2012 Equality Objectives

1. We will increase the use of the Minor Repairs Assistance scheme by BME (Black & Minority Ethnic) groups by 5%
2. We will increase the response rate to planning consultations by under-represented equality groups by 5%.
3. We will ensure our workforce is representative by increasing the:
 - % workforce from BME backgrounds by at least 5%
 - % workforce who consider themselves to have a disability by at least 10%

2012 Equality Objectives

4. We will increase the level of staff satisfaction of non-white British staff by 10%
5. We will ensure that 100% of Muslim burials take place within 24hrs of request
6. We will increase the level of satisfaction of BME residents with council owned leisure centres by 10% by 2015 to equal that of White British residents.
7. We will increase take-up of our business start up support service by women from 43% to 45% and by residents over 50 from 20% to 22%

Understanding Our Communities

Our population is ageing, both nationally and locally.

By 2020 it is estimated that almost 25% of Chorley's population will be aged 60 and over

The Chorley population is increasing.

The number of households in Chorley has increased from 41,027 in 2001 to 44,900 in 2011

Our communities are changing and becoming more diverse. An example being an increase in the Muslim population in Chorley



Understanding Our Communities

Although overall crime rates are reducing, some specific incident rates have increased slightly.

However, feelings of safety amongst Residents have increased (92% feeling safe when outside during the day)

Chorley Council workforce

The percentage of young people is low, 5.7% are aged 16-24 years. 85% of our workforce feel they are treated fairly and with respect.

Although our customers are generally satisfied with our services, there are some who are less satisfied than others.



Objective 1

To work towards ensuring our overall approach to equalities falls within excellence on the Equalities Framework for Local Government, where this is considered proportionate and appropriate

Measures and targets:

- Reaching excellence in specific areas of the EFLG framework self assessment

Objective 2

To achieve a representative workforce at all levels of the organisation and to continue to ensure all employees feel they are treated fairly and with respect

Measures and targets:

- Increase the percentage of staff feeling that they are treated with respect and consideration by 5%
- Increase the percentage of those aged 16-24 in the workforce by 25%

Objective 3

To reduce the effect of rural isolation across the borough

Measures and targets:

- A 50% increase in the number people attending digital access sessions
- Develop a community car scheme



Objective 4

To ensure future service planning and delivery takes into account equality considerations and is informed by demographic trends

Measures and targets:

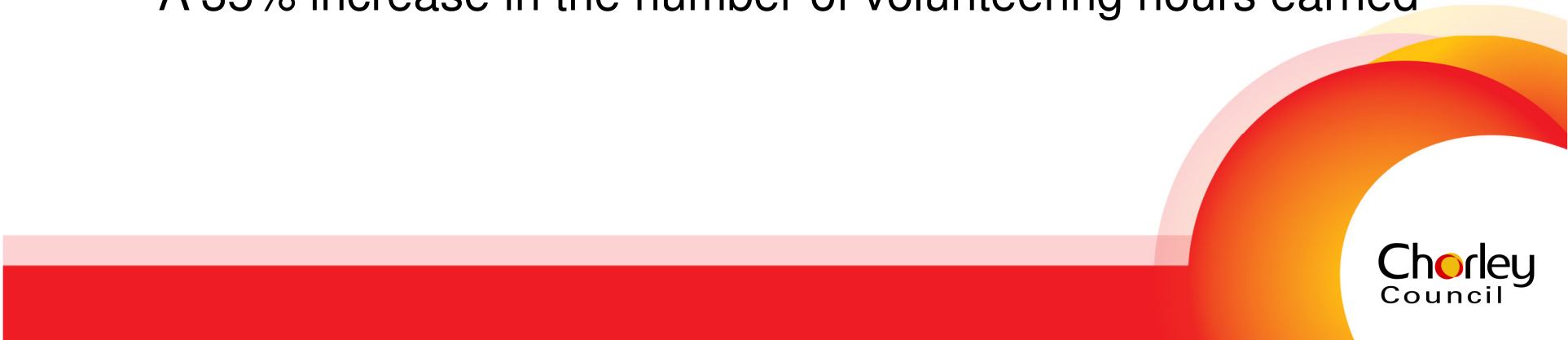
- 90% of Impact Assessments completed / reviewed

Objective 5

To foster good relations and improve community cohesion in communities across the borough

Measures and targets:

- 60% of residents willing to work together to improve local area
- A 35% increase in the number of volunteering hours earned



Objective 6

To increase the satisfaction levels of our customers and ensure all members of our community have the opportunity to, and feel that they are able to engage

Measures and targets:

- Less than 20% of customers dissatisfied
- 85% of residents satisfied with the local area as a place to live
- Satisfaction by disaggregated characteristic
- Respondent data disaggregated by protected characteristic

Objective 7

To ensure our public realm and town centre improvement plans consider the needs of protected groups

Measures and targets:

- Increase the percentage of consultation and engagement views and responses from communities across protected groups by 5%
- Results of Integrated Impact Assessment

What do you think?



What do you think?



Next Steps

- Analyse your comments and feedback
- Objectives will then be put onto our website for consultation
- They will go to Executive Cabinet for sign-off
- Our new objectives will be published April 2016
- More information can be found on our website:
<http://chorley.gov.uk/Pages/AtoZ/Equality-information.aspx>

This page is intentionally left blank